



**MOVME<sup>®</sup>**

**MAKE EVERYTHING EASIER**





00109Q12296RIM/3302  
00109E20323RIM/3302  
00109S10127RIM/3302



CNAS 0601-Q, E, S



# CQD15

**AC**

**EPS**  
(Option)

MAX. LIFT HEIGHT:

**8000mm**

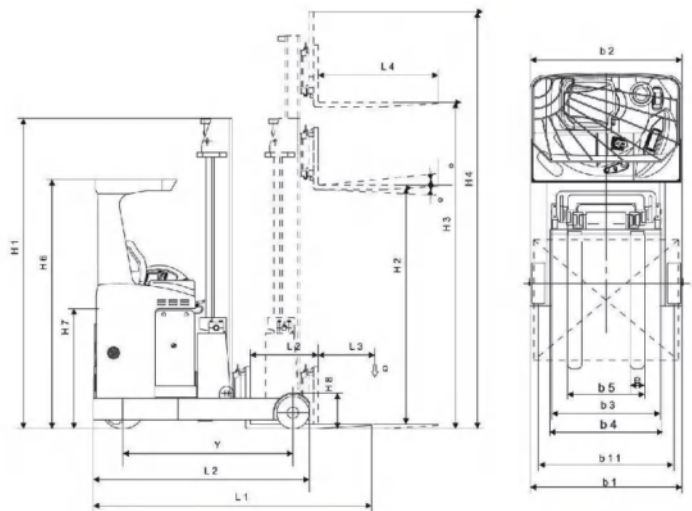
CQD15(EPS) Reach Truck is innovation type based on CQD15M, which with heavy duty chassis, extra large compartment and unequalled visibility. Which can excels bigger load capacity at high reach elevations, compact cabin design can be used in drive in racking, the operator can work more effectively.

## OPTION:

- Electronic multi valve.
- Finger-tip control stick.
- Side shift.
- Height selection and height position system.
- LCD display and camera (LCD for cold storage are available).
- Travel/back-up flashing lights.
- Side-way battery.

## STANDARD:

- AC control system.
- Powering steering system (EPS).
- Multi-function display can show: Brake status, Driving direction, Hour meter, Driving speed, Fault code, etc.
- Manual multi-valve.
- Adjustable speed for forks lifting/lowering mast forward/backward and side shift right/left.
- German ZF brand gear box.
- Adjustable steering wheel.
- With traveling speed limited device when forks at high level.
- Electronic height limited device.



Model	CQD15	
Drive: electric (battery type, mains, ...), diesel, petrol, fuel gas	Electric	
Operator type: hand, pedestrian, standing, seated, order-picker	Seated	
Rated capacity/rated load	Q (kg)	1500
Load centre distance	c (mm)	600
Load distance, centre of drive axle to fork	x (mm)	365
Wheelbase	y (mm)	1500
Service weight	kg	3410
Axle loading, unladen front/rear	kg	2017/1393
Axle loading, fork advanced, laden front/rear	kg	1050/3860
Axle loading, fork retracted, laden front/rear	kg	1830/3080
Tyres: solid rubber, superelastic, pneumatic, polyurethane	Polyurethane	
Tyre size, front	Φ310×125	
Tyre size, rear	Φ285×110	
Wheels, number front/rear (× = driven wheels)	1x/2	
Tread, rear	b <sub>11</sub> (mm)	1090
Tilt of mast/fork carriage forward/backward	a/b (°)	2/2(fork)
Height, mast lowered	h <sub>1</sub> (mm)	2090/2340/2740/3190/3390
Free lift	h <sub>2</sub> (mm)	0/0/0/1440/1940/2390/2590
	h <sub>2</sub> (°) (mm)	0/0/0/1700/2100/2500/2700
Lift	h <sub>3</sub> (mm)	3000/3500/4000/5000/6200/7400/8000
Height, mast extended	h <sub>4</sub> (mm)	3800/4300/4800/5800/7000/8200/8800
Height of overhead guard (cabin)	h <sub>6</sub> (mm)	2140
Overall length	l <sub>1</sub> (mm)	2433
Length to face of forks	l <sub>2</sub> (mm)	1300
Overall width	b <sub>1</sub> /b <sub>2</sub> (mm)	1200/1200
Fork dimensions DIN ISO 2331	s/e/l (mm)	35/100/1070
Fork carriage ISO 2328, class/type A, B	2A	
Fork-carriage width	b <sub>3</sub> (mm)	928
Fork spread	b <sub>5</sub> (mm)	680
Distance between wheel arms/loading surfaces	b <sub>4</sub> (mm)	840
Reach distance	l <sub>4</sub> (mm)	550
Ground clearance, laden, below mast	m <sub>1</sub> (mm)	80
Aisle width for pallets 1000 × 1200 crossways	Ast (mm)	2880
Aisle width for pallets 800 × 1200 lengthways	Ast (mm)	2930
Turning radius	Wa (mm)	1780
Length across wheel arms	l <sub>7</sub> (mm)	1880
Travel speed, laden/unladen	km/h	8.0/8.3
Lift speed, laden/unladen	m/s	0.24/0.3
Lowering speed, laden/unladen	m/s	0.45/0.36
Reaching speed, laden/unladen	m/s	0.1/0.1
Max. gradeability, laden/unladen	%	10/10
Service brake	Electromagnetic	
Drive motor rating S2 60 min	kW	3.0(AC)
Lift motor rating at S3 15%	kW	8.2(AC)
Battery voltage/nominal capacity K5	(V)/(Ah) or kWh	48/400
Battery weight	kg	640
Sound pressure level at the driver' s seat	dB (A)	70



Camera and positioning: Optional positioning system offers easier pallet handling at height through camera system.



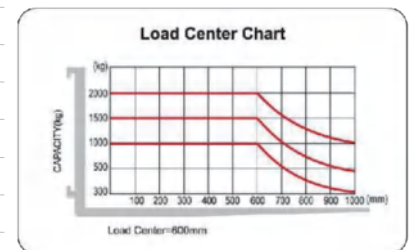
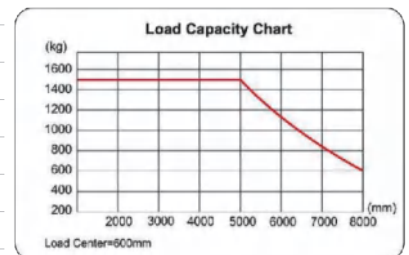
Ergonomic and full suspension comfortable seat full adjustable.



Precise and effortless finger tip control of mast movements and traveling. Comfortable armres and light power steering wheel.



Drive in Reach Truck (option).





TEL: 0086-532-66739792

FAX: 0086-532-66739791

info@movmes.com

NO.88 Chunyang Road,Chengyang,

QINGDAO,CHINA

[www.movmes.com](http://www.movmes.com)